

The Echo is a handheld Vector Impedance Analyzer, Spectrum Analyzer, Frequency Domain Reflectometer (FDR) and Power Meter for measuring antennas, networks, and cables. Echo has the capability of providing digital measurements and graphical sweep displays of impedance, RF power gain, or cable quality. The Echo's testing functionality combined with its 4MHz to 1.0GHz or 2.5GHz frequency ranges makes it a versatile tool for numerous service applications.

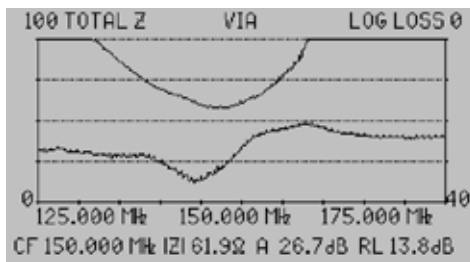
The Echo PC Vision™ software application, included with the VIA Echo, provides the user with the capability of remotely operating the VIA Echo through a USB port and view near real-time results or Echo's stored tests on a PC. PC Vision provides color Cartesian and Smith Charts of vector plot data. The PC Vision software makes the capture, storage, and printing of documentation and reports easy.



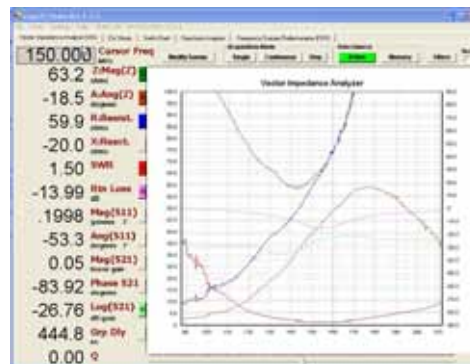
4 Instruments in one hand-held package

Vector Impedance Analyzer

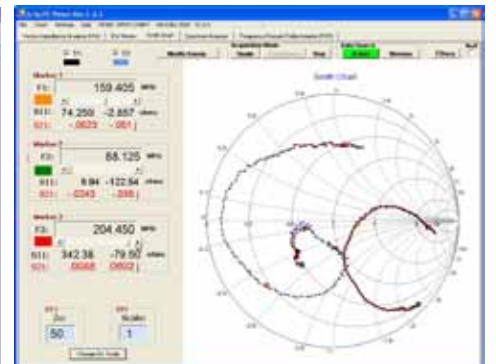
3 Measurement Displays -
2 graphical and 1 digital



PC Vision VIA Chart

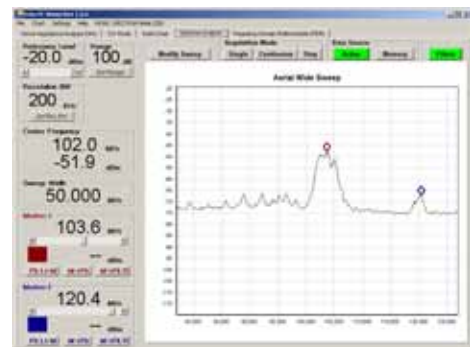
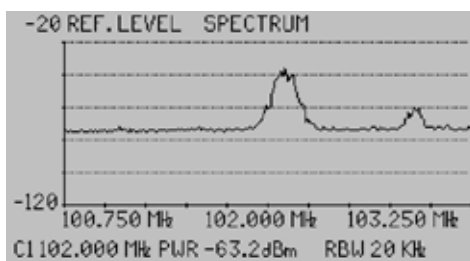


PC Vision Smith Chart



Spectrum Analyzer

Broad or Narrow Spectrum Selection

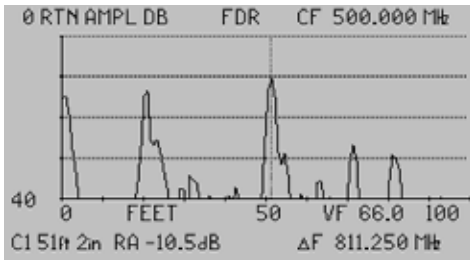


Power Meter



Frequency Domain Reflector

View cable performance at frequency in RL or SWR



PC Vision's FDR Screen



Plus

- CW mode
- Cable Null
- Custom instrument settings
- Automatic internal calibration
- Fast frequency or width entry via keypad
- Date/Time stamped testing
- PPT training included

Specifications

- Frequency range 4MHz to 1.0 GHz (1000, 1000SF & MRI)
4MHz to 2.5GHz (2500)
- Tuning/display resolution 1KHz up to 1.1GHz
10KHz for ~1.1GHz-2.5GHz
10KHz for Spectrum Analyzer
- Input power range +20/-60dBm
- FDR cable length 35 to >10Kft (10 to >3300m)
- Measurement speed 2 Seconds/Sweep
- Frequency display width 250 points x N x resolution (N=integer)
- Impedance range 2 to 2000 Ohms
- Impedance plotting scales 0 to 50 Ohms min, 0 to 2000 Ohms max
- Phase angle plotting scales +/- 15 to +/- 180 degrees
- Impedance formats Resistance, reactance, Z, Z angle, SWR, return loss, S11 vector
- Gain formats Log, linear, phase and group delay
- Power meter 20dBm to -30dBm,
47dBm to 0dBm with optional attenuator
- Harmonic and spurious >15dB below Fundamental
- Output power ~ +3dBm @ 50 Ohms
- Power requirements 13.8-20 VDC @ 500 mA. minimum or
8 AA(Alkaline or NiMH or Nicd)
- Antenna connectors "N" Type standard with
SMA-to-N Adaptor Kit (optional)
- Size 8.5"x4.3"x2.25" (216x109x57 mm)
- Weight 2 lbs 3 oz (1Kg) with case and batteries

Features

- Simultaneously view two separate plots with different scales
- Automatic calibration and self-test
- Large numeric display in CW mode
- S11 and S21 test ports
- Cable/fixture nulling
- 250 memory slots for both plot storage and setup data
- Echo **PC Vision** software included
Real time display of plots on PC
Smith chart display
EASY uploads into PC
- Quarter VGA backlit LCD
- Auditory cues for non-visual tuning
- Spectrum Analyzer and FDR (1000SF & 2500)
- Lightweight and portable
- Internal NiMH or NiCd recharger
- USB communication to PC

Optional Accessories

- Pre-Amplifier.....6025-0290
- 30dB Attenuator.....6025-0265

For connection adapters, optional terminators and other accessories refer to the Accessories data sheet or visit our website at www.aeatechnology.com and click on "Products/Accessories" in the toolbar at the top.

Models

- VIA Echo 1000..... 6025-5100
- VIA Echo 1000 SF..... 6025-5150
- VIA Echo 2500..... 6025-5250



Made in the USA

Includes

- PC Vision** software..... 6025-1220
- USB cable..... 0070-1206
- AC adaptor, 100-240 VAC 5001-0202
- Soft equipment case..... 6015-1002
- Belt case..... 5001-1002
- Calibration load set (1000 & 1000SF)..... 6015-1301
- N Terminator Set (2500)..... 6025-0270
- 8 AA NiMH batteries..... 0010-0218



5933 Sea Lion Place, Suite 112
Carlsbad, CA 92010
TEL 800-258-7805 or +1-760-931-8979
FAX +1-760-931-8969